

### Early Education Curriculum

Happy February! Below, please find the curriculum planned for the month.

Please join us in welcoming our new infants, toddlers, and preschoolers to the Ellis community:

Florence Joshua, Emmeri, Olivia, Jeremiah, Henry, Ayleen, Zaid, and Matthew.

## UPK/Preschool

### Bruins and Patriots: Animals All Around Us

In Unit 3, children observe and discover animals residing in various habitats, including the urban landscape, the outskirts of the city, and the ocean. They will also make direct connections between themselves and other animals.

#### Big Ideas:

- Animals are part of our community.
- Human beings are a species of animal.
- Animals communicate.
- Animals have specialized body parts, and they use them to meet their needs (water, food, air, shelter). Animals use senses to gather information about the world around them.

### Maple, Celtics, and Red Sox: Beginning Unit 3 - Wind and Water

Children will explore the properties of wind and water and consider how essential water is for living things. Children will experiment with moving water through different means. They will also observe and record the wind and weather outdoors.

#### Big Ideas:

- Wind and water affect living and non-living things.
- Living things respond in different ways to different kinds of weather.
- Wind and water can inspire art, play, and other activities.
- Water is essential for living things.
- People use water for drinking, washing, cooking, gardening, travel, and play.
- Water can change from a liquid to a solid to a gas.



# Toddlers

## Exploration Unit - How Things Move

In this unit, children will discover motion by using their bodies, objects, and the world around them as they explore and play.

### Big Ideas:

- How do different materials, people, and animals move in different ways?
- How can I make things move?
- How do rhythm and music inspire movement?



# Infants

Our youngest scholars will be growing and learning so much in 2025!

You will receive your child's **individual curriculum** so you can try the activities they are doing in the classroom at home. Throughout the month, teachers will provide activities and record your baby's responses.

### Infant Reminders:

- EEC requires all children to have something on their feet. Please make sure your baby has socks, booties, or shoes to wear in the classrooms.
- Please make sure your child has a daily, labeled, supply of sippy cups or bottles for every feeding. These will be sent home daily for cleaning.

## Classroom Requests

1. Please ensure your children have extra, seasonally appropriate clothing in their cubby.
2. Please wash your child's hands upon entering the classroom.
3. Please arrive no later than 9:30 am. Breakfast is served from 8:15-9:15.

## STEM Corner

Hello! My name is Ana and I'm the Ellis STEM Exploration Educator! Going forward, each monthly newsletter will include a brief note about what your toddlers and preschoolers are learning in their STEM class. In January, the Bears, Cubs, Breakers, Oak, Birch, Cedar, Butterflies, Caterpillars, Pollywogs, and Froggies students explored the sounds different items make, experimented with our wind tunnel to watch items fly through the air, and connected ramps to watch balls roll down. The Red Sox, Maple, and Celtics students watched colors foam by adding dyed vinegar to baking soda, and experimented with items that sink and float (even building a few boats along the way!). The Bruins and Patriots built bridges out of cardboard and learned to code a [robot named Kibo](#).

Going into February, our Bears, Cubs, Breakers, Oak, Birch, Cedar, Butterflies, Caterpillars, Pollywogs, and Froggies classrooms will continue exploring air, land, and water to see how different items move in different environments. The Red Sox, Maple, and Celtics classrooms will build parachutes, experiment with ice, and playing with the properties of water. The Bruins and Patriots will add to their coding knowledge and begin to learn about how animals live in their environments, exploring camouflage and shelters.

You can encourage STEM in your own home by asking your little learners about the world around them! What makes a ball roll? Where do birds sleep? Why do some things sink and others float? When does a car go over a bridge? How does ice melt? Asking questions is a wonderful way to get things turning

## Social Work Corner

Hi, my name is Emma Geary! I am the Bachelors of Social Work (BSW) intern here at Ellis Early Learning. Currently, I am a senior at Simmons University with a major in Social Work and a minor in Public Health. My primary role at Ellis is leading the social skills group, but I also assist in classroom support and family resources. After graduation in May, I plan to get my Masters of Social Work (MSW) and hopefully earn a position as a school social worker. I will be at Ellis every Monday and Wednesday until May!

So, what is school social work?

Social Work is such a broad profession! We can do just about anything. Overall, Social workers provide a variety of support and services to all clients and communities we interact with. The primary goal of the social work profession in general is to help people overcome the challenges of everyday life. The practice is centered around meeting the basic needs of individuals, families, communities, and society as a whole to enhance their collective well-being.

According to the National Association of Social Workers (NASW), “School social workers are an integral link between school, home, and community in helping students achieve academic success.” Liz, Cherish, Sami and Emma work with the families at Ellis to be a “bridge” between families, educators and our Greater Boston community. For our students, we offer support with emotional regulation and behavior management, as well as observations for potential referrals.

Come find us and say hi!

**Liz** is on the 3rd floor of 58 Berkeley Street

**Cherish** is on the 2nd floor of 66 Berkeley Street

**Sami** is across from the bathrooms at Ellis-JP



## Boston Children's Museum Free Tickets

We have a select number of tickets for the Children's Museum, which will expire on March 20th. If you are interested in attending **Please fill out this form** by Friday February 14th to be included in the raffle.

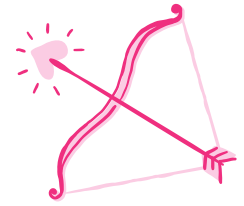
Tenemos un número limitado de entradas para el Museo de los Niños, que vencerán el 20 de marzo. Si estás interesado en asistir por favor, **completa este formulario** antes del viernes 14 de febrero para participar en el sorteo.

## Important Dates:

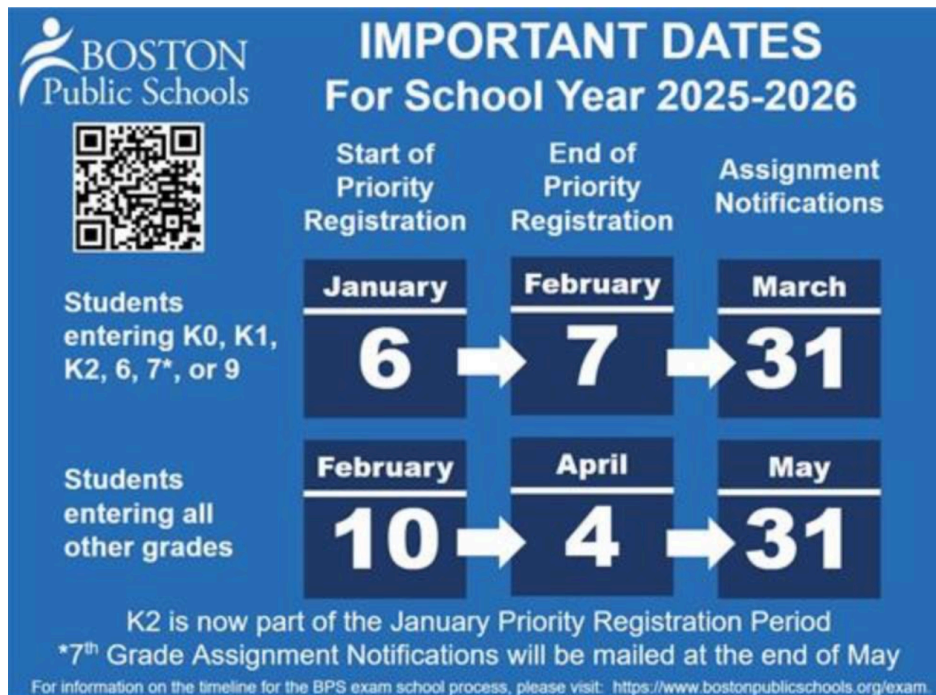
Friday 2/14- 3PM Closure for Professional Development

Friday 2/14 – Pajama Day

Monday 2/17- President’s Day, Ellis Closed



## Boston Public Schools Registration



Here are links to explain the process for enrolling in BPS:

English; <https://youtu.be/rVZeieUk21o>

Spanish: <https://youtu.be/TDst-G7WWCY>

[South End February Menu](#)

[South End February Vegan/Vegetarian/Allergy Menu](#)

[JP February Menu](#)

[JP February Vegan/Vegetarian/Allergy Menu](#)



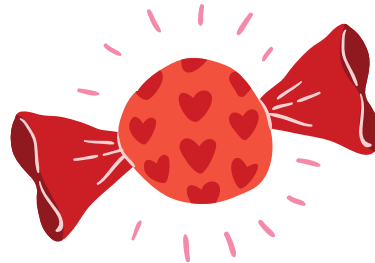
## February Birthdays

Anmary 2/4      Yerinson 2/23  
 Luana 2/5      August 2/24  
 Juliet 2/7      Lyla 2/24  
 Onyx 2/8      Sophia 2/24  
 Jackson 2/11      Trinity 2/24  
 Xaylee 2/21



## Birthday at Ellis- Policy Reminder

With a focus on equity and accessibility, Ellis does not permit outside food to be served at Ellis. Birthdays will be celebrated with joy and merriment.



## February Anniversaries

Ms. Francis 2/1  
 Ms. Winter J 2/114  
 Ms. Winter H 2/21



## NEC "Family Notes" music newsletter and Upcoming NEC music class information

[NEC "Family Notes" English](#)

[NEC "Family Notes" Spanish](#)

[NEC "Family Notes" Haitian Creole](#)

As part of New England Conservatory's partnership with Ellis Early Learning, we would like to wholeheartedly invite you to register for one of NEC Prep's mid-year early childhood music classes, beginning the week of January 20! Scholarships are available!

Website with more information: <https://necmusic.edu/expanded-education/nec-prep/>

For help with registrations and scholarships, please contact Vanessa Trien, Director of Early Childhood Education, at [vanessa.trien@necmusic.edu](mailto:vanessa.trien@necmusic.edu)

A larger selection of Fall 2025 early childhood music classes will be available for enrollment in April.

### [Handout with more information](#)

### **Music Discovery for Little Penguins:**

Thursdays, 5:00-5:50 pm at New England Conservatory, for ages 3-5 and their caregivers. Begins January 23.

Perfect group class to build a strong, early musical foundation and bond with your little ones through music! Taught by Director of Early Childhood Education, Vanessa Trien

### **Musical Explorers:**

Saturdays, 9:00-9:50 am at New England Conservatory, for ages 4-7. Begins January 25

Take a musical journey to discover and explore various instrument families and what NEC Prep has to offer, including choirs, brass, string, percussion and more! Lead instructor is Laura Nevitt who teaches at Ellis South End!

### **Piano Explorers:**

Saturdays, 4:40-5:30 pm, for ages 4-7, by placement audition. Great group beginner class to get ready for private piano lessons! Taught by NEC Prep's amazing piano faculty.

## Family Resources

**Positive Behavior Support (PBS) at Home Series** by Liz Muscolino, M.Ed., EdS UPK Behavioral Health Services Liaison

### **What Is Positive Behavior Support (PBS) and why should I care?**

Positive Behavior support, or PBS, is an approach to interacting with children that has been shown to improve child behaviors and adult feelings of well-being. All behavior is communication. When we acknowledge our child's behavior, even behaviors like tantruming, as communication, we can move away from snap judgements and knee-jerk reactions and start to use every situation, no matter how unpleasant, as an opportunity to support a "child's capacity to love, trust, explore and learn". Although most parents (91% from a large, diverse sample) find parenting to be a source of great joy, they also report having many questions about child-rearing practices. PBS, Responsive Caregiving, and Positive Parenting can offer some answers on the journey of parenthood. Each month in this year's family newsletter, we will share, review, and provide examples of one of the nine key elements of Positive Parenting.

Watch this 5-minute video <https://vimeo.com/136542836> from Zero-To-Three about Positive Parenting.

The full original article can be found here - <https://www.zerotothree.org/resource/nine-elements-that-power-positive-parenting/>.

### **Notice and celebrate your child's strengths, abilities, and capacity to learn and develop**

Element description: This element of Positive Parenting is all about taking moments to notice who your child really is and celebrate whatever you find. Is your child someone who boldly explores new places and gets into everything? Is your child someone who likes to stay close to familiar people until he gets comfortable? There are lots of qualities that may be easy to celebrate. It may be easy to celebrate that your child is curious with toys or sensitive to the feelings of others. There are also lots of qualities that may be difficult to find a positive perspective on. No matter what qualities we see when we make observations about our children, we can find something positive to celebrate. Celebrating who our children are can be a great opportunity to stretch our creative muscles.

Ideas for using this in everyday moments: Notice that your child bosses other children around? A positive perspective may be that they are a natural leader. Notice that your child cries a lot? A positive perspective may be that they are really expressing how they feel! Notice that your child touches everything? A positive perspective may be that she is curious about how things work.

**Additional Resources:** If you want to learn more about noticing children's behavior and celebrating what you find, check out this free 30-minute webinar from Conscious Discipline on perception and attention - Tools for Your Parenting Toolbox <https://consciousdiscipline.com/e-learning/webinars/tools-for-your-parenting-tool-box/>.



This school year, Ellis is continuing its partnership with The Housman Institute, an early childhood education training, professional development, curriculum, and research organization that promotes the development of emotional intelligence from birth.

In this partnership, our staff will be a part of the research-based begin to ECSEL (Emotional, Cognitive, and Social Early Learning) Educator Training Program. Teachers and administrators will take courses and work with Housman Institute Coaches to teach children how to effectively identify, understand, express, and regulate their big emotions.



The program teaches educators and children to:

- Understand the cause and effect of emotions
- Develop empathy and prosocial skills
- Gain problem-solving and conflict resolution skills to support healthy development, emotional well-being, and academic success

You, as your child's first teacher, will be working together with their classroom teachers to ensure collaborative communication continues in the best interest of your child's ongoing growth and development.



Throughout the year, our team will complete ECSEL courses and receive ongoing support and feedback from ECSEL coaches. We will utilize ECSEL language, tools, and techniques in our classrooms with your children. We will continue to provide families with updates and additional information in the coming weeks.

We are so excited to see the impact that this program will have on children, classrooms, staff, families, and on the Ellis community!

